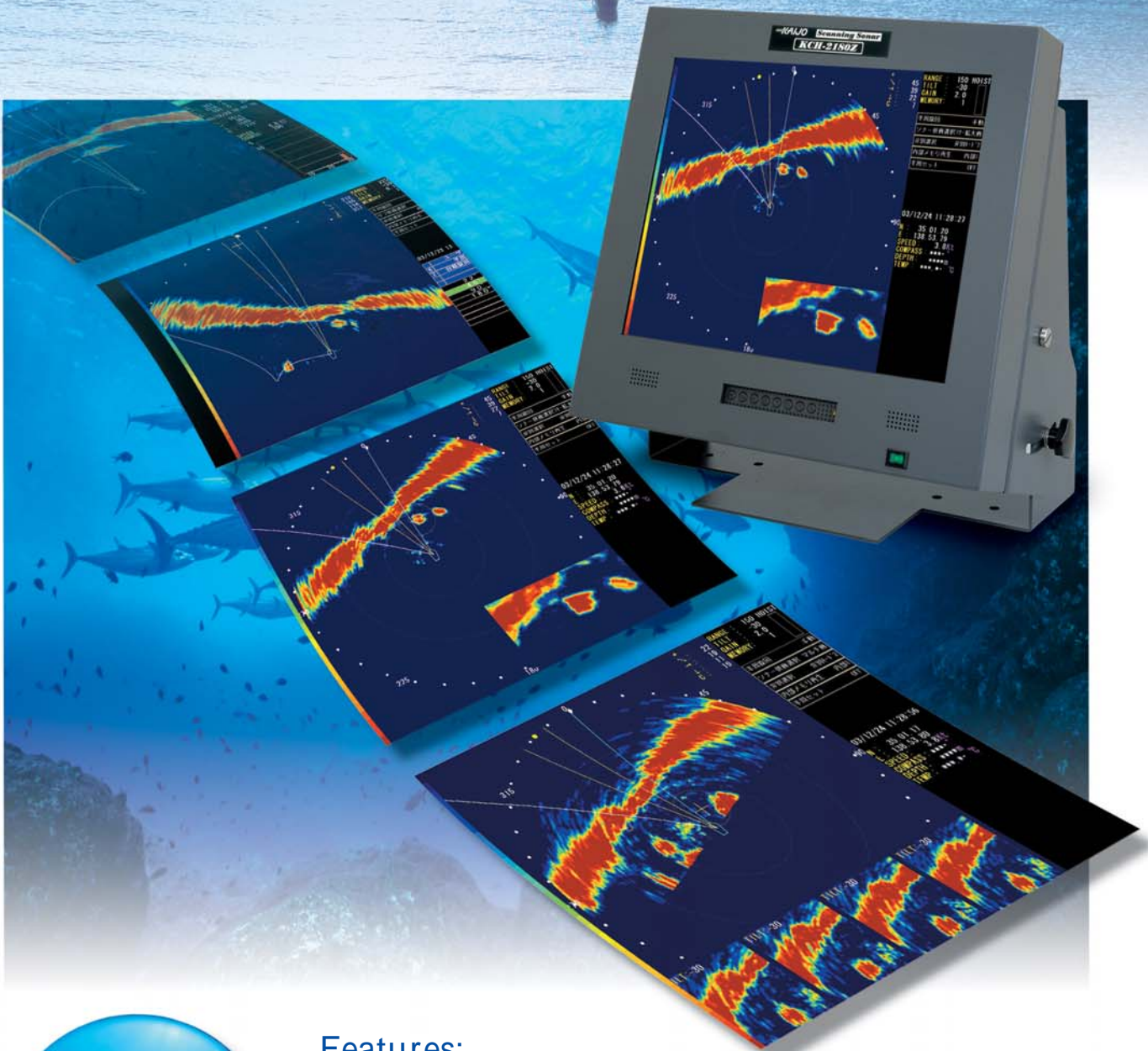




# Half Scanning Sonar Model KCH-2180

Exceptional detecting capability with high resolution.  
Clear definition even for schools at seabed level!



## Features:

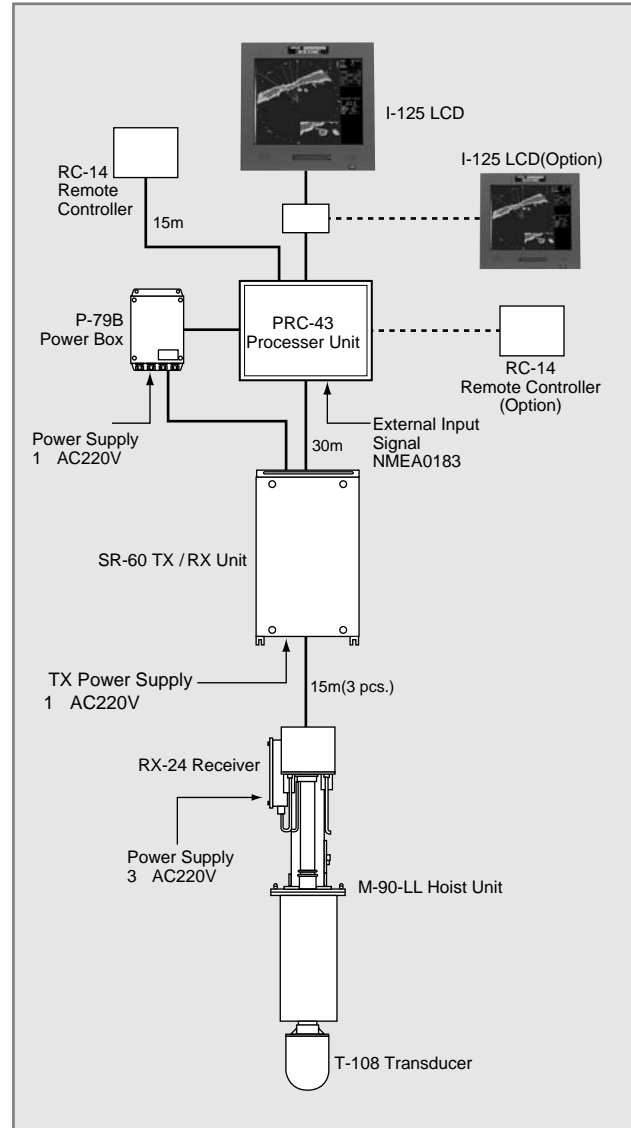
- Easy distinction between fish schools and bait with high resolution
- High frequency and long detection with a special transmission system
- A clearer picture display created by intensive signal processing (SXGA 1280×1024)
- A variety of functions to the sub-mode (Enlarged image, Multi image, Memory save/load image, etc.)

# Half Scanning Sonar Model KCH-2180

## Specifications

Image: PPI image by TFT liquid crystal color display  
 Display resolution: SXGA(1280 x 1024)  
 Display color: Signal(32 colors), Character(4 colors), Marker(2 colors)  
 Frequencies: 164kHz, 174kHz, 184kHz  
 Display mode: Head-up, North-up, Tru motion  
 Sub display mode: Character display, external input signal, and fish-school image display are selectable.  
 Simultaneous-display image function: Cut-out image, enlarged image, storage image  
 Off-center: 1.5 times enlargement of selected area  
 Off-center, rotation mode, set mode  
 Fish-school graph: Displayed by the strength of echoes from schools of fish  
 Types of display marks:  
 Own boat/wake/cross-line cursor/  
 bearing mark/cast net mark/  
 event mark(max.10 marks)/  
 variable distance mark/tidal current mark/  
 school-of-fish mark, and other marks.  
 Audio output: 2W(8 )  
 Audio frequency: 750Hz  
 Ranges: 150, 200, 250, 300, 400, 500, 600, 700, 800, 1000,  
 1200,1400, 1500, 1600, 1800, 2000, 2500, 3000,  
 4000, 5000  
 The range when off-center has been enlarged  
 by 1.5times(10 different ranges are selectable)  
 Other functions: Clutter, signal processing,  
 interference elimination, TVG, AGC, RCG  
 Receiving method: Superheterodyne method  
 External signal output: Four inputs available with NMEA0183.  
 (while Kaijo's devices are connected for 2 inputs)  
 (1) NMEA0183: Own boat position, boat speed,  
 boat speed bearing, sea depth, sea water  
 temperature, or bow bearing  
 (2) Kaijo's devices IF-17 and GC-21:  
 Tilt: 0° ~ - 90 °can be selected by  
 mechanic circuit control  
 Rotation: Mechanically variable in a range between  
 ± 175 degrees  
 Hoist: About 1000m/m(LL type)  
 Hoist time: About 25 seconds(LL type)  
 Power supply: Receiving Single-phase 100V AC, 600VA  
 Transmitting Single-phase 220V AC, 1500VA  
 Hoist unit 3-phase 220V AC, 750VA

## System Components



## System Components

Composition	Type	Unit	Weight	Measurement(W x H x D)
Display section	I-125 LCD	1	12kg	447 x 450 x 210mm
Control section	RC-14 Remote controller	1	1kg	200 x 172 x 50mm
Processing section	PRC-43 Processor unit	1	37kg	465 x 654 x 302mm
Transmitter/Receiver section	SR-60 TX /RX Unit	1	113kg	534 x 910 x 445mm
Receiver section	RX-24 Receiver	1	8kg	304 x 436 x 114mm
Hoist section	M-90-1-LL Hoist unit equipped with T-108 transducer	1	600kg	570 x 2950 x 775mm
Power supply section	P-79 Power box	1	12kg	215 x 335 x 153mm

**CAUTION FOR SAFETY: Please read surely INSTRUCTION MANUAL before operating**  
 Specification is subject to change without prior notice for improvement.

# KAIJO



ISO 14001

## KAIJO SONIC CORPORATION

### HEAD OFFICE

3-1-5, SAKAE-CHO HAMURA-SHI, TOKYO, JAPAN 205-8607  
 TEL.81-42-555-6080 FAX.81-42-579-5171

[URL] <http://www.kaijasonic.co.jp> [E-mail] [info@sonic.kaijo.co.jp](mailto:info@sonic.kaijo.co.jp)

### OVERSEAS MARKETING & SALES DEPARTMENT

9TH FLOOR, KANDABASHI PARK BLDG,  
 1-19, KANDA-NISHIKICHO CHIYODA-KU, TOKYO, JAPAN 101-0054  
 TEL.81-3-3294-7615 FAX.81-3-3294-7663

### OVERSEAS DISTRIBUTOR

## KAIJO CORPORATION

SEOUL BRANCH TEL 82-2-563-3345 ~ 6 FAX 82-2-563-3347

TAIPEI BRANCH TEL 886-2-2709-3538 FAX 886-2-2704-8907